

TRAKMATE

RAIL VEHICLE SCALE SYSTEM FOR WEIGHING & BALANCING



TRAKMATE installed within a Rail Workshop



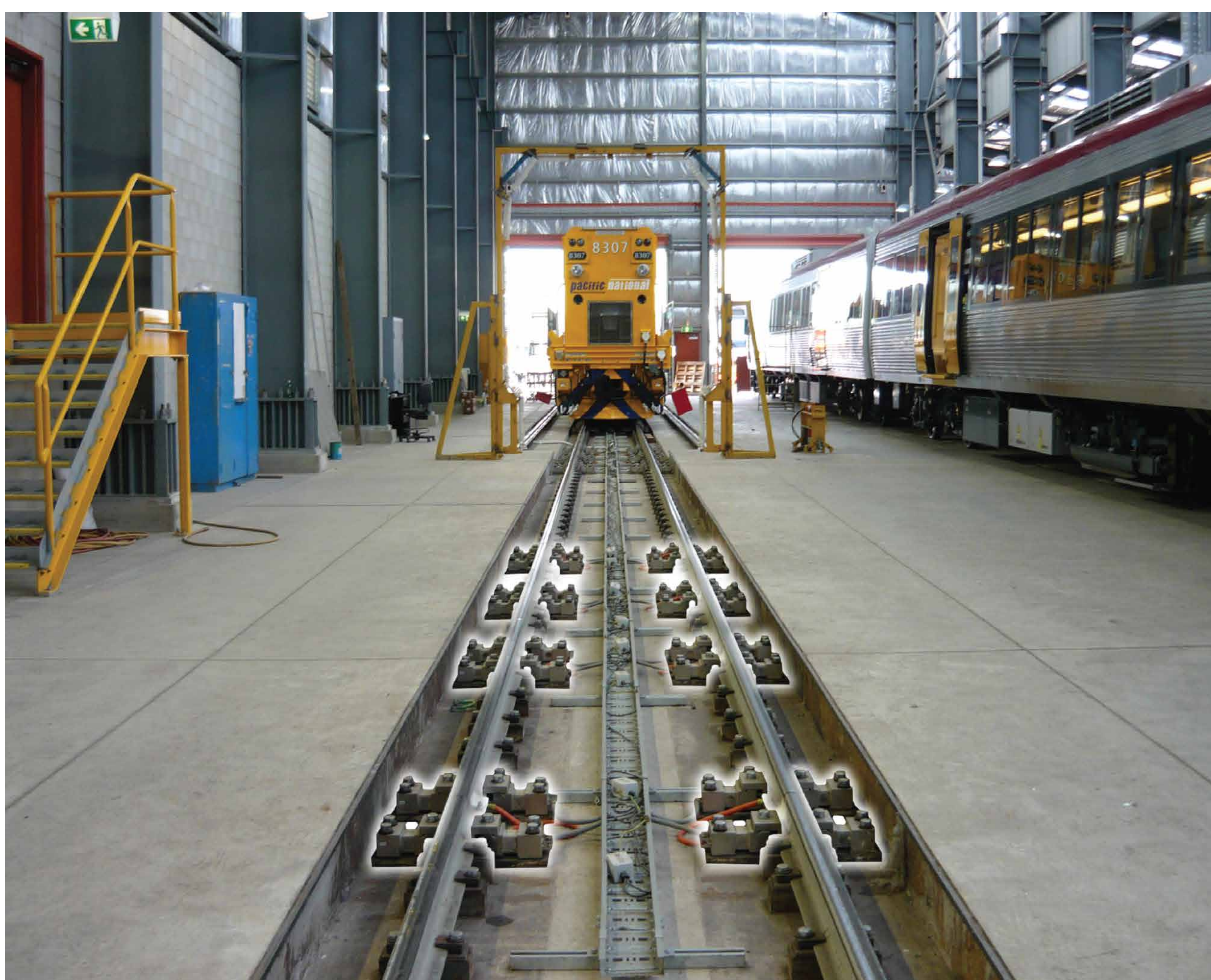
TRAKMATE modules installed on a TRUCK Press

NORTH AMERICA'S MOST RELIABLE WEIGHING & BALANCING SOLUTION FOR RAIL CARS & LOCOMOTIVES...

TRAKMATE is a technologically advanced software and loadcell based system specifically designed for weighing and balancing locomotives and rail cars in rail manufacturing, maintenance workshops, rail truck presses and other suited applications.

5 REASONS WHY RAIL CARS SHOULD BE WEIGHED & BALANCED:

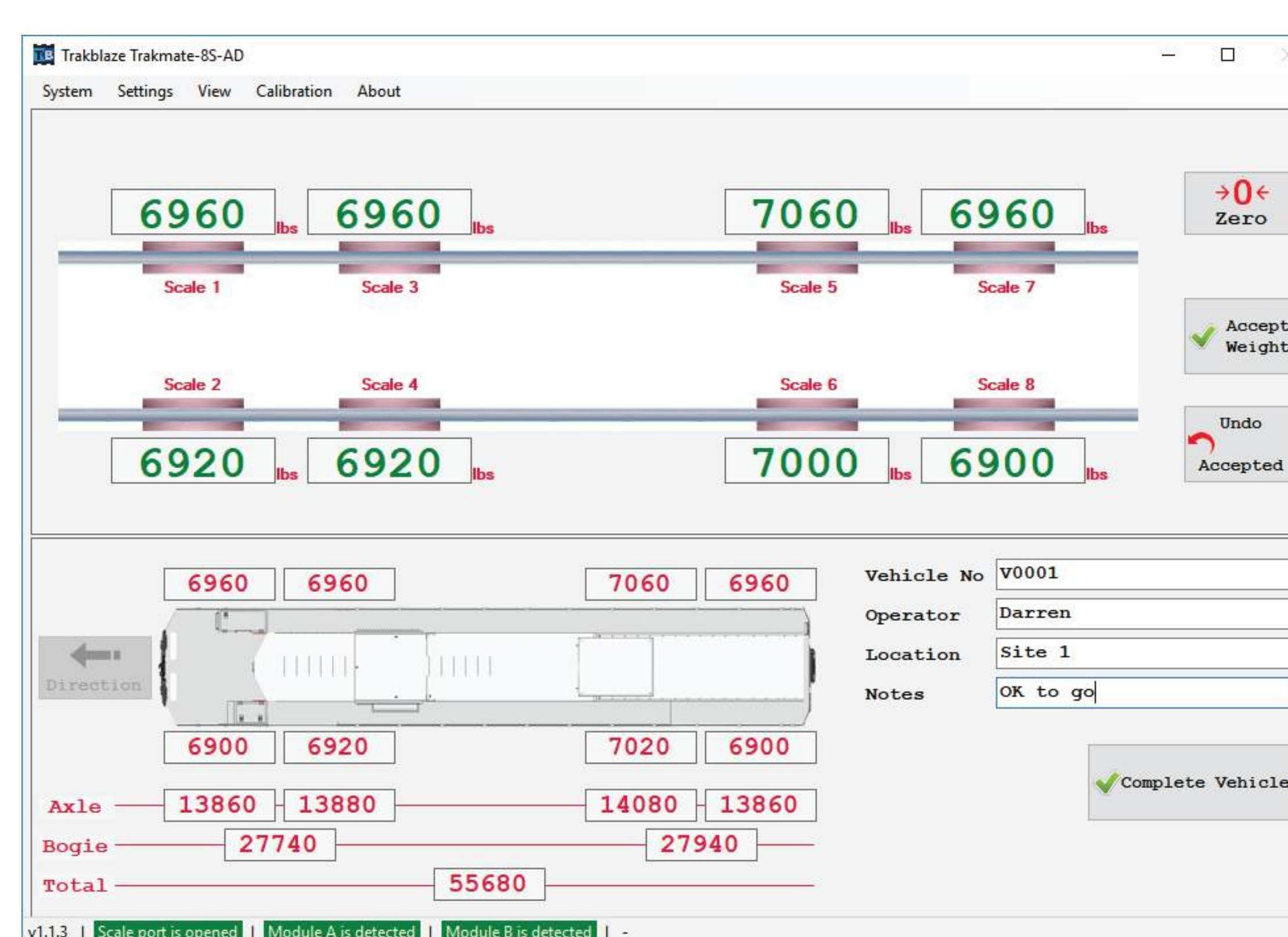
1. To improve SAFETY.
2. Prevent possible derailments.
3. Prevent brake lockups & wheel flat spots.
4. Prevent rail car & rail track infrastructure damage.
5. Evenly balanced rail cars provide smoother mobility & better fuel economy.



TRAKMATE LOADCELLS UNDER RAILS



TRAKMATE ONSITE CALIBRATION TEST PRESS



TRAKMATE ON SCREEN SOFTWARE

BENEFITS:

- * Simple to install
- * Suits all rail types
- * Temperature compensated
- * Heavy Duty - with overload protection
- * Cost effective with return on investment
- * Provides wheel, axle, truck / bogie, and full vehicle weights
- * Easy to use software package with comprehensive reporting
- * Customized to integrate with a variety of applications and workshop configurations



SALES • SERVICE • RENTALS • MANUFACTURING SINCE 1948

2535 W. Broadway, Phoenix, AZ 85041
P.O. Box 8760, Phoenix, AZ 85066
602-243-3951 • 800-373-7763
602-243-0435 fax
www.swscale.com