

# MTW

## STATIC or IN MOTION MOBILE TRAIN WEIGHER



### FEATURES:

- ✓ User friendly
- ✓ Four easy steps to install (2men - approx 15 minutes)
- ✓ Transportable in the boot of a car
- ✓ Loadcell based system
- ✓ In motion or Static weighing
- ✓ Wheel, axle, truck and vehicle weight
- ✓ Multiple MTW's can be combined together
- ✓ Fits all recognised rail gauges
- ✓ Fits most rail sizes
- ✓ Instant printout or download to PC
- ✓ Wheel weights as standard

MTW-S8 pictured, used in multiples as an alternative to a Static Weighbridge in preparing Test Wagons

The MTW is a train weighing system that can be transported in the boot of a car, utility or train cabin and set up to weigh and spot check a rail vehicle / train anywhere static or in motion.

The MTW offers one of the world's most convenient, safe & accurate train weighing solutions.

The MTW design incorporates a chassis arrangement with an integrated loadcell, this design means weight is applied directly to the loadcell and not through the rail.

The advantage of weighing axle by axle is that there is no restriction with regards to wagon type. The MTW is factory pre-calibrated, so that no test train is required.

### 4 easy steps to install:



Measuring the height to determine the shim size



Attaching the Rail Shoe



Inserting the MTW into the track and expanding the system via the threaded support poles



Connecting the cables, Wireless option also available



Battery operated digital readout & printer in carry case.

Approx. Dimensions  
19in x 14in x 9in

### BENEFITS:

- No track downtime during installation
- No costly civil works required
- Battery operated
- Simple operation



# MTW-S (STATIC)

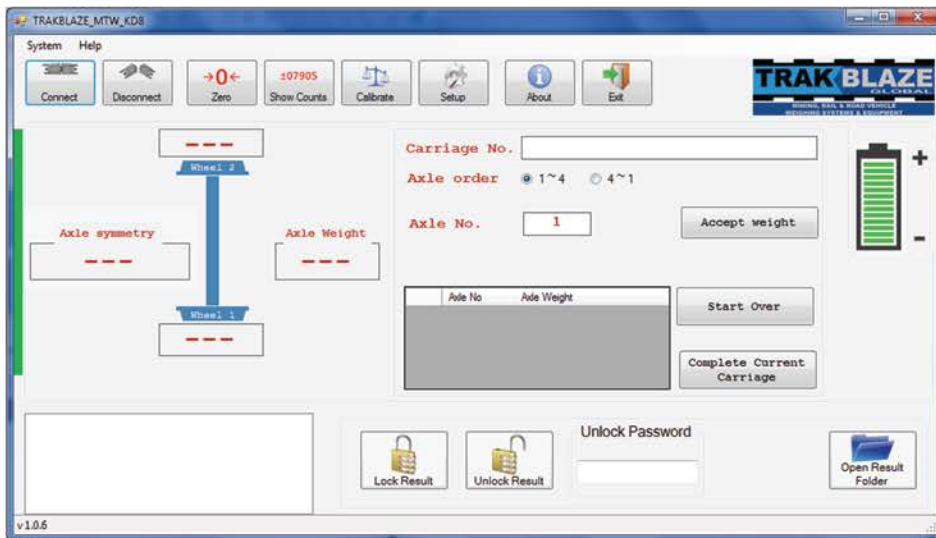
## TECHNICAL DATA

Length	From 24in
Approx. Weight	44lbs - 220lbs
Power Supply	110-240V AC / 12V internal battery
Materials	High quality tool and mild steel
Capacity	70,000lbs / Axle
Increment Size	50lbs
Protection Class	IP-67 / IP-56
Temperature	+10F to140F
Mounting	Rail shoes to fit rail type
Installation Time	10 ~ 15 minutes (two men)
Accuracy	+/- 0.5% Subject to good track condition and rolling stock
Standard Number of Bases/Wheels	Between 1 to 4 bases / 2 to 8 wheels (Over 4 bases available on request)

# MTW-D (IN-MOTION)

## TECHNICAL DATA

Length	24.62in - 25.82in
Approx. Weight	44lbs - 220lbs
Power Supply	110-240V AC / 12V internal battery
Materials	High quality tool and mild steel
Capacity	70,000lbs / Axle
Increment Size	100lbs
Protection Class	IP-67 / IP-56
Temperature	+10F to140F
Mounting	Rail shoes to fit most rail types
Installation Time	approx 10 ~ 15 minutes (two men)
Weighing Speed	Up to 3mph
Accuracy (approx.)	2-3%. Less than 1% under ideal conditions



Customised PC software (optional) displays and records all the weight data

A/N	Wheel 1	Wheel 2	Axle Total	WC	mph
<b>Locomotive</b>					
F	11750 lbs	12900 lbs	24650 lbs	0	2.7
F	11750 lbs	12900 lbs	24650 lbs	0	2.5
F	11750 lbs	12900 lbs	24650 lbs	0	2.3
F	11750 lbs	12900 lbs	24650 lbs	0	2.3
F	11750 lbs	12900 lbs	24650 lbs	0	2.2
F	11750 lbs	12900 lbs	24650 lbs	0	2.2
<b>Wagon 1</b>					
1	11750 lbs	12900 lbs	24650 lbs	0	2.7
2	11750 lbs	12900 lbs	24650 lbs	0	2.7
3	11750 lbs	12900 lbs	24650 lbs	0	2.7
4	11750 lbs	12900 lbs	24650 lbs	0	2.7
			246500 lbs		
			Total wagon weight		
			98600 lbs		

Sample of Printout from built in Printer

### CONSISTS OF (single base unit):

- 2 x loadcells
- 2 x scale main bodies
- 1 x set of shoes (to suit nominated rail type)
- 1 x set of spacers
- 1 x height measuring rod
- 1 x weight indicator and printer housed in carry case
- 1 x battery charger
- 1 x spanner
- 1 x cable set
- 1 x operation manual



MTW secure storage box.

Approx. Dimensions  
44in x 24in x 28in



MTW Kit